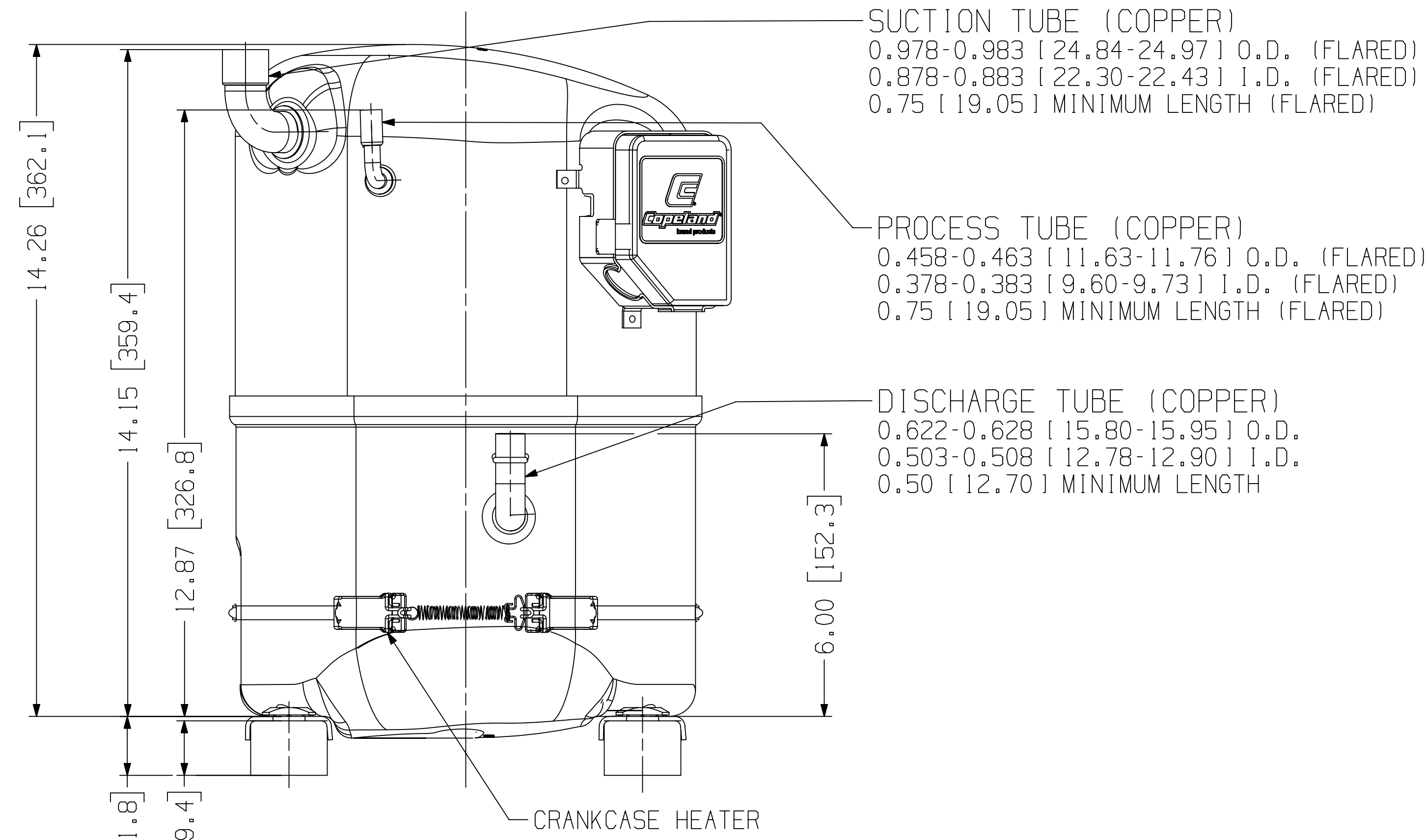
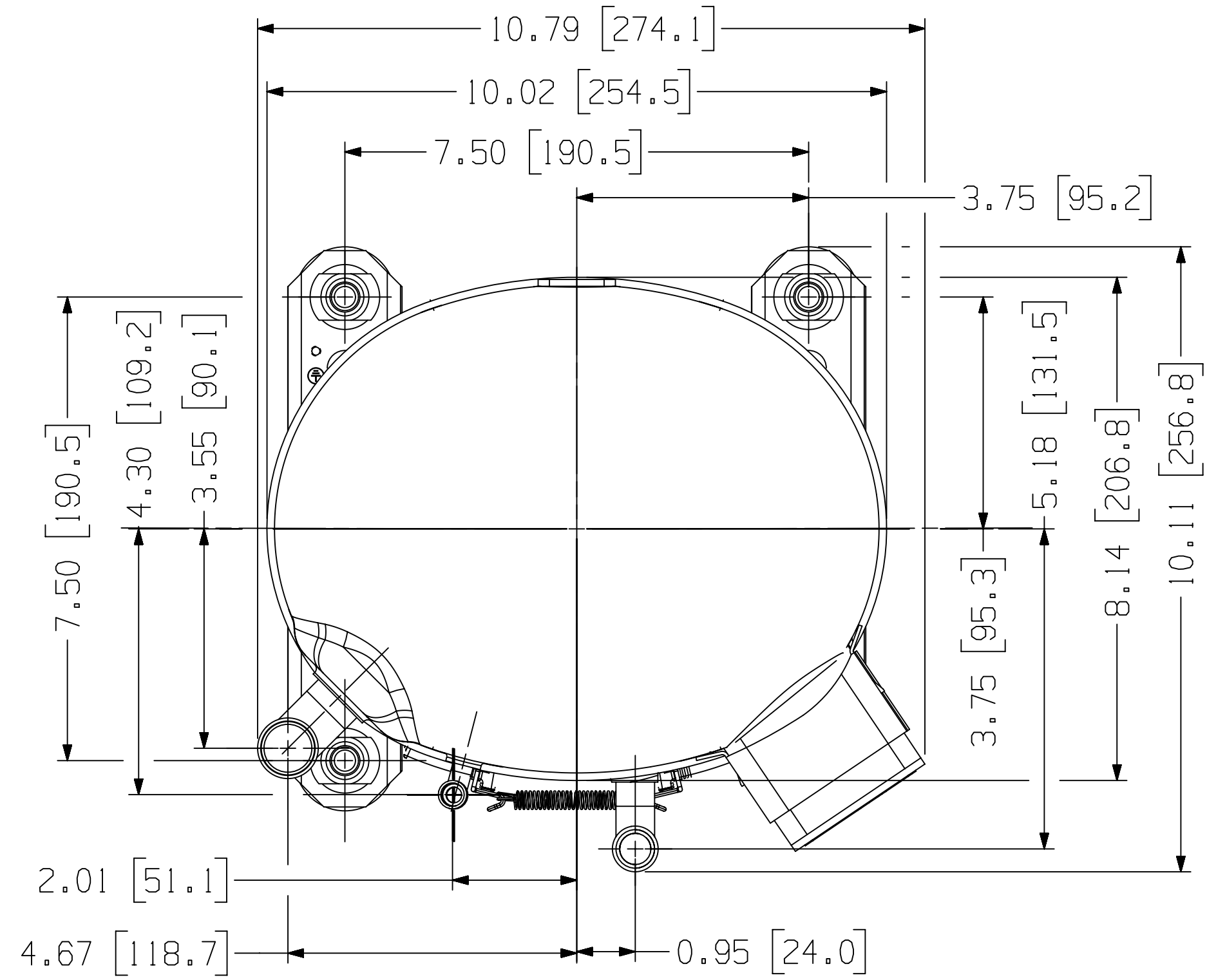


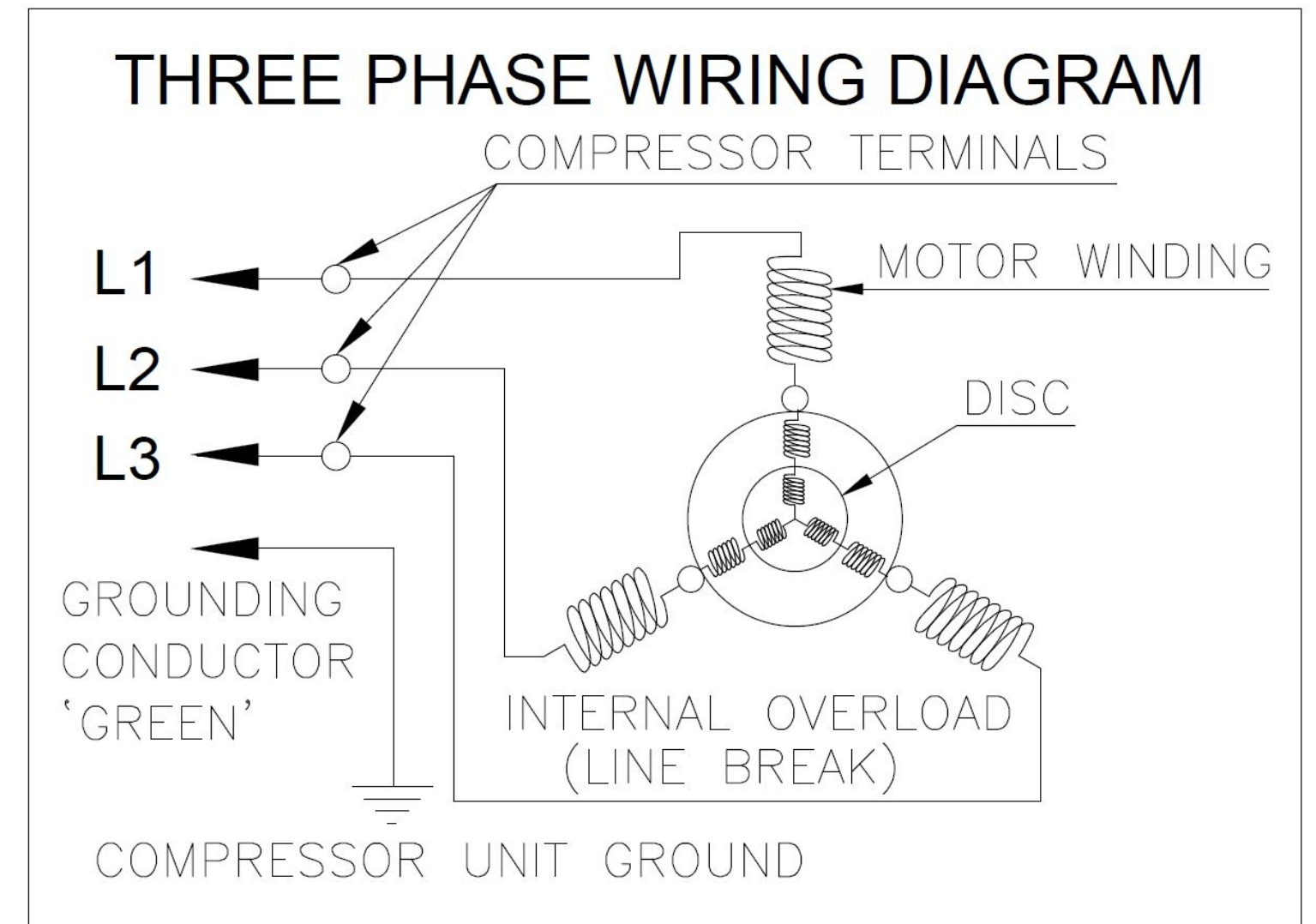
PART No.	COMPRESSOR MODEL	CRANKCASE HEATER 40 WATT @
	CR47KQME-TFD-201	OMIT
	CR47KQME-TFD-202	240 V
	CR47KQME-TFD-203	480 V
	CR53KQME-TFD-201	OMIT
	CR53KQME-TFD-202	240 V
	CR53KQME-TFD-203	480 V
	CR57KQME-TFD-201	OMIT
	CR57KQME-TFD-202	240 V
	CR57KQME-TFD-203	480 V
497-2970-06	CR62KQME-TFD-201	OMIT
	CR62KQME-TFD-202	240 V
	CR62KQME-TFD-203	480 V
	CR47KQME-TF5-201	OMIT
	CR47KQME-TF5-202	240 V
	CR53KQME-TF5-202	240 V
	CR57KQME-TF5-202	240 V
	CR62KQME-TF5-202	240 V
	CR72KQME-TFM-202	240 V

* Add Suffix DM for Sale in India Only



DUE TO ACCUMULATED ASSEMBLY TOLERANCES THE LISTED PARAMETERS MAY VARY FROM THE MOUNTING HOLES AS TABULATED BELOW. OTHER DIMENSIONS SHOWN ARE MEAN DIMENSIONS AND MAY VARY AS PER RESPECTIVE COMPONENT DRAWINGS.

TOTAL HEIGHT ±0.13 [3.2]	PROCESS TUBE ±0.13 [3.2]
DISCHARGE TUBE ±0.13 [3.2]	SUCTION TUBE ±0.13 [3.2]
MOUNTING HOLE CENTER DISTANCE ±0.03 [0.8]	



NOTES:-

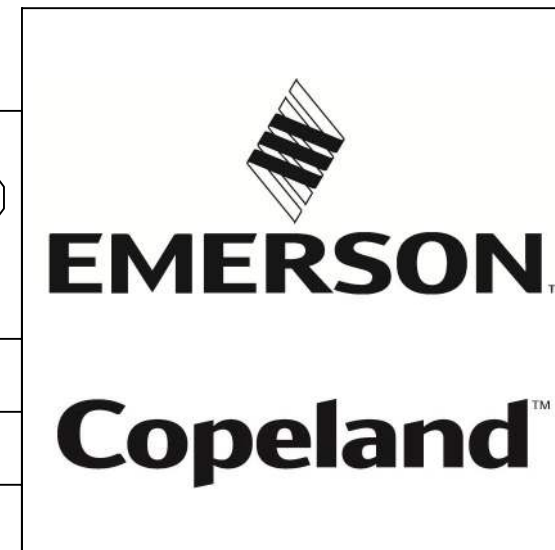
1. FOOT MOUNTING BOLT TORQUE SHOULD NOT EXCEED 12 lb-ft (16.27 N-m)
2. COMPRESSOR COLOR - BLACK.
3. BRACKETED DIMENSIONS ARE IN mm.
4. RUBBER GROMMET MAY COMPRESS BY 0.075 [1.91] ±0.025 [0.63] APPROXIMATELY DUE TO COMPRESSOR WEIGHT. THE RELATED DIMENSIONS MAY VARY ACCORDINGLY.
5. FOR PERFORMANCE DETAILS, REFER PRODUCT SPECIFICATION.

GUIDELINES FOR HANDLING AND DISPOSAL OF PRODUCTS :

1. HANDLE PRODUCT WITH CARE AND IN UPRIGHT POSITION TO AVOID SPILLAGE OF COMPRESSOR OIL.
2. DISPOSE OFF RUBBER TUBE PLUGS THROUGH GOVERNMENT AUTHORIZED SCRAP CENTERS.
3. IF PRODUCT IS TO BE DISPOSED OFF THEN, PLEASE DO IT THROUGH GOVERNMENT AUTHORISED SCRAP CENTERS.

REF. DWG. No.
CRXXKQME-TFX-20X/A4

F25-1118-0233	0	RELEASED	11.28.18	DVM	SRS	MMN
ENG NOTICE NO.	REV.NO.	REVISIONS	DATE	BY	CHKD	APPR
CONFIDENTIALITY NOTICE						
35	THIS DRAWING AND INFORMATION CONTAINED HEREIN ARE THE EXCLUSIVE PROPERTY OF EMERSON CLIMATE TECHNOLOGIES, INC. AND SHALL BE RETURNED UPON DEMAND AND SHALL NOT BE REPRODUCED IN WHOLE OR IN PART DISCLOSED TO ANYONE ELSE OR USED, WITHOUT THE WRITTEN CONSENT OF EMERSON CLIMATE TECHNOLOGIES, INC.					
MATERIAL SPECIFICATION		DRAWN BY	SUPERSEDES DWG. NO. / REV. NO.			
---		DVM	---			
		DATE	SCALE	DATE FORMAT:		
		11.19.2018	1:2	MM-DD-YY		
TITLE			DRAWING NUMBER	SHEET 1 OF 1		
REF DWG-WELD COMP ASSM			497-2970-06	4		
				SIZE		



INTERPRET PER ASME Y14.5M-1994 AND EMERSON CLIMATE TECHNOLOGIES, INC. DESIGN STANDARDS DS2002

DO NOT SCALE DRAWING

THIRD ANGLE PROJECTION

CRITICAL PRODUCT CHARACTERISTICS

UNLESS OTHERWISE SPECIFIED DIMENSIONS ARE INCH OR (MILLIMETER)

TOLERANCES:
2-PLACE ± N/A
3-PLACE ± N/A
ANGULAR ± N/A

© COPYRIGHTEM ERSON CLIMATE TECHNOLOGIES, INC. - CONFIDENTIAL