



3Dfindit

powered by  **CADENAS**

SIEMENS

SIEMENS

VVF53

CONTENT

Augmented Reality (AR) - Digital meets real	2
3D preview of VVF53	3
Integrate Siemens Building Technologies EUROPEAN Portfolio catalog inside your CAD System	4
2D derivations and Bill-Of-Material (BOM)	5
Technical drawings	6
Technical data	7
Get a free E-Learning training for Siemens Building Technologies EUROPEAN Portfolio catalog	8



3Dfindit

powered by  CADENAS

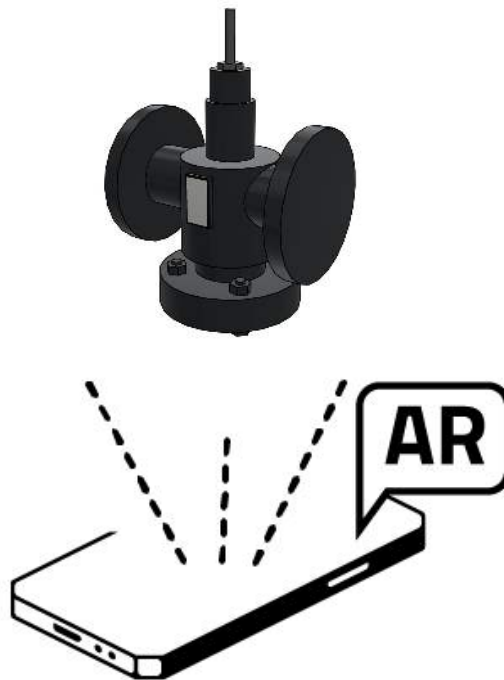
SIEMENS

SIEMENS

VVF53

AR

Augmented Reality, often shortened to AR, is a technology that blends digital information into the real world. For more information, please click [here](#) or directly try yourself by scanning the QR code with your phone.



Please scan the QR code above and open on AR-enabled device.

There is a possibility that the configuration will fail. If that happens, please try a different product.



3Dfindit

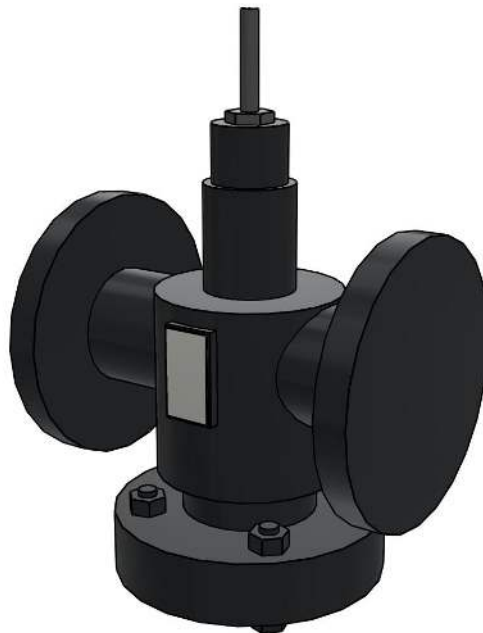
powered by  CADENAS

SIEMENS

SIEMENS

VVF53

3D view



HOW TO ACTIVATE 3D?

To activate the interactive 3D view in Acrobat Reader, you need to select, at the top of the page, **Options** and then **Trust this document**

Zoom

Moves you toward or away from objects in the scene when you drag vertically. You can also zoom with the hand tool by holding down Shift as you drag.

Pan

Moves the model vertically and horizontally only. You can also pan with the hand tool: Ctrl-drag.

Rotate

Turns 3D objects around relative to the screen. How the objects move depends on the starting view, where you start dragging and the direction in which you drag.



3Dfindit

powered by  CADENAS

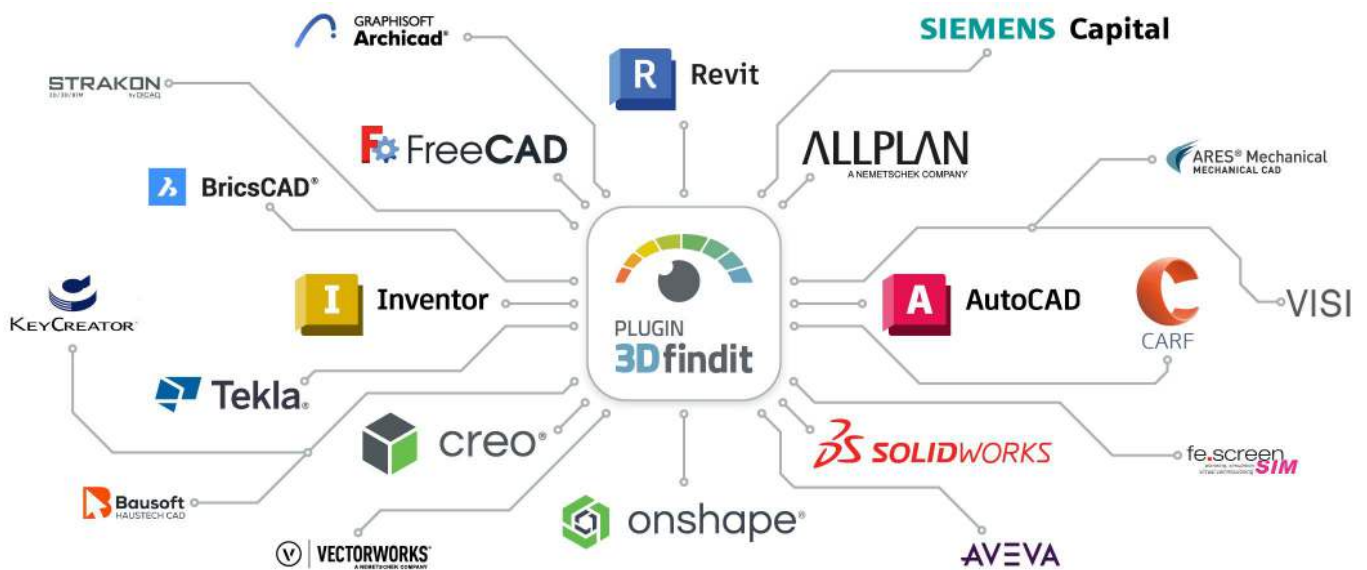
SIEMENS

SIEMENS

VVF53

CAD plugins

With our CAD integrations, you can use 3Dfindit directly in your CAD system and make your work easier with additional comfort functions, such as replacing a part and many more.



To the plugins



3Dfindit

powered by  CADENAS

SIEMENS

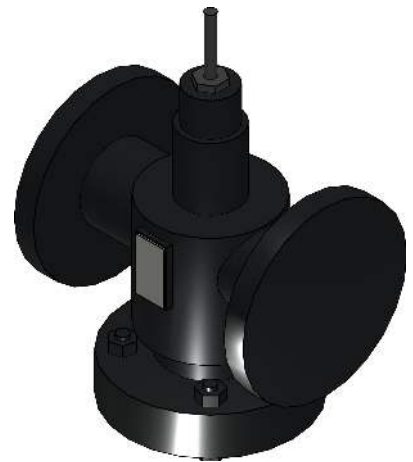
SIEMENS

VVF53

2D derivation



ISO view



Bill-Of-Materials

N°	Description	Amount
1.1	VVF53.50-40 Durchg.ventilPN25Flansch	1



3Dfindit

powered by  **CADENAS**

SIEMENS

SIEMENS

VVF53

Technical drawings



3Dfindit

powered by CADENAS

SIEMENS

SIEMENS

VVF53

Technical data

SA010ID04 (Manufacturer's name)	Siemens Building Technologies EUROPEAN Portfolio
SA700ID26 (Product description)	VVF53.50-40 2-Port ValvePN25flanged
SA110ID05 (Main product group)	VVF53.50-40
PREVIEW (Preview)	../../../../bilder/a6v10320117.png
LODLEVEL (Level of detail)	Low
SA700ID04 (Valve assembly type)	shut-off and control valve assemblies
SA700ID28 (nominal dimension)	50
SA700ID06 (kvs value / m³/h)	40
SA700ID30 (Nominal pressure PN)	25
SA71012ID04 (Length / mm)	230
SA71012ID05 (Width / mm)	165
SA71012ID06 (Height / mm)	342.5
SA71012ID08 (mass (net) / kg)	13.6
SA700ID07 (Maximum operating temperature / °C)	220
SA700ID08 (Maximum operating pressure / bar)	25
SA400ID03 (Body material)	grey iron
LINK ()	http://www.siemens.com/btproduct?S55208-V128
SA810ID03 (Manufacturer order number)	S55208-V128
SA810ID04 (Datanorm number)	S55208-V128
SA810ID06 (GTIN number)	7612914079527
SA810ID10 (Description text)	2-port seat valve, flanged, PN25, DN50, kvs 40
SA810ID14 (Units of quantity)	PCE
SA810ID15 (Quantity per packaging unit)	1
SA810ID16 (Name of the packaging unit)	NMP
SA010ID06 (Manufacturer's web address)	http://www.siemens.com/buildingtechnologies
SUPPORTLINK (Supportlink)	https://support.industry.siemens.com/cs/ww/en/ps/25261
SA010ID12 (Status of the manufacturer's catalog)	20210514
ETIMCLASSC (ETIM Classcode)	EC011435
ETIMCLASSN (ETIM Classname)	Two way control valve
IFCEXPORT (IfcExportAs)	IfcValve.REGULATING
OMNICLASSNU (OmniClass number)	23-27 31 29 15
OMNICLASS (OmniClass title)	Thermostatically Controlled Mixing Valves
UNICLASSC (Uniclass code)	Pr_65_54_95_87
SA010ID02 (Blattnummer der Richtlinie)	2
SA010ID03 (Date of issue (month) of the standard)	200111
SA100ID03 (Sort number for display sequence)	4



3Dfindit

powered by  CADENAS

SIEMENS

SIEMENS

SA100ID07 (Creation date)	20200701
SA810ID08 (Comment field)	Durchgangsventil, Flansch, PN25, DN50, kvs 40
VAR0810002 ()	vvf53_file1.dwg
INFO (Information about export to accessory combination)	When selecting accessory combination, please select export format "Autodesk Revit Instance+Family 20XX (3D)"!
ACCESSORY_1 (Accessories: Antriebe)	-



3Dfindit

powered by  CADENAS

SIEMENS

SIEMENS

VVF53

E-Learning

Discover free training for 3Dfindit, the search engine for engineers, designers, and architects. Our 30 to 50-minute interactive courses provide you with comprehensive knowledge about the platform. Upon successful completion, you will receive a certificate. Start your first course now and master 3Dfindit!

**Become an Expert of
Digital Engineering**



3Dfindit

**Boost your career
and get ready
for Industry 4.0!**

[Learn more](#)

[Start course](#)