



3Dfindit

powered by  **CADENAS**



SIEMENS

SQL361E...

CONTENT

Augmented Reality (AR) - Digital meets real	2
3D preview of SQL361E...	3
Integrate Siemens Building Technologies EUROPEAN Portfolio catalog inside your CAD System	4
2D derivations and Bill-Of-Material (BOM)	5
Technical drawings	6
Technical data	7
Get a free E-Learning training for Siemens Building Technologies EUROPEAN Portfolio catalog	8



3Dfindit

powered by  CADENAS

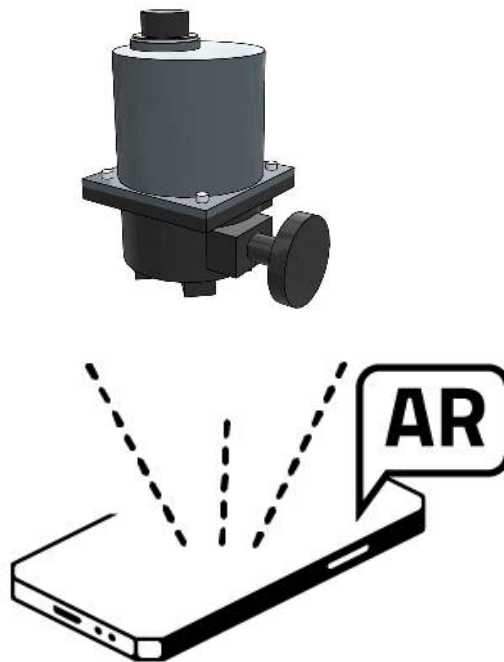


SIEMENS

SQL361E...

AR

Augmented Reality, often shortened to AR, is a technology that blends digital information into the real world. For more information, please click [here](#) or directly try yourself by scanning the QR code with your phone.



Please scan the QR code above and open on AR-enabled device.

There is a possibility that the configuration will fail. If that happens, please try a different product.



3Dfindit

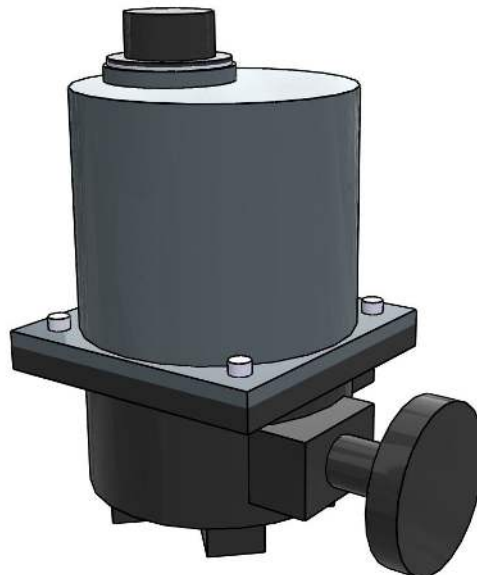
powered by  CADENAS



SIEMENS

SQL361E...

3D view



HOW TO ACTIVATE 3D?

To activate the interactive 3D view in Acrobat Reader, you need to select, at the top of the page, **Options** and then **Trust this document**

Zoom

Moves you toward or away from objects in the scene when you drag vertically. You can also zoom with the hand tool by holding down Shift as you drag.

Pan

Moves the model vertically and horizontally only. You can also pan with the hand tool: Ctrl-drag.

Rotate

Turns 3D objects around relative to the screen. How the objects move depends on the starting view, where you start dragging and the direction in which you drag.



3Dfindit

powered by  CADENAS

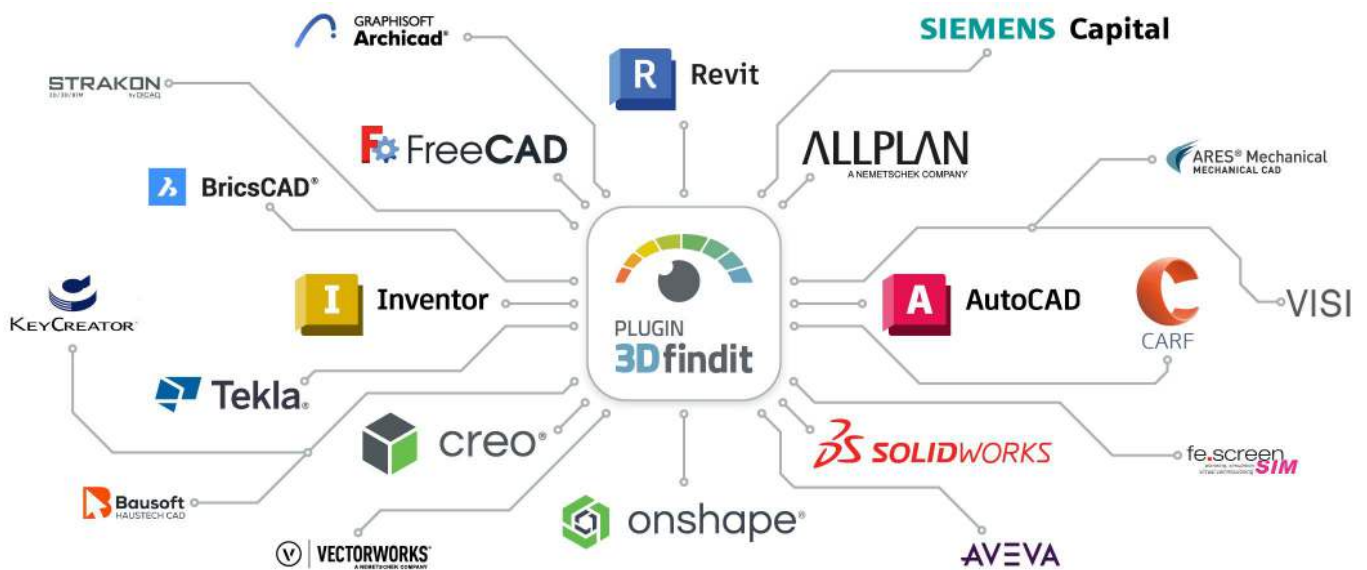


SIEMENS

SQL361E...

CAD plugins

With our CAD integrations, you can use 3Dfindit directly in your CAD system and make your work easier with additional comfort functions, such as replacing a part and many more.

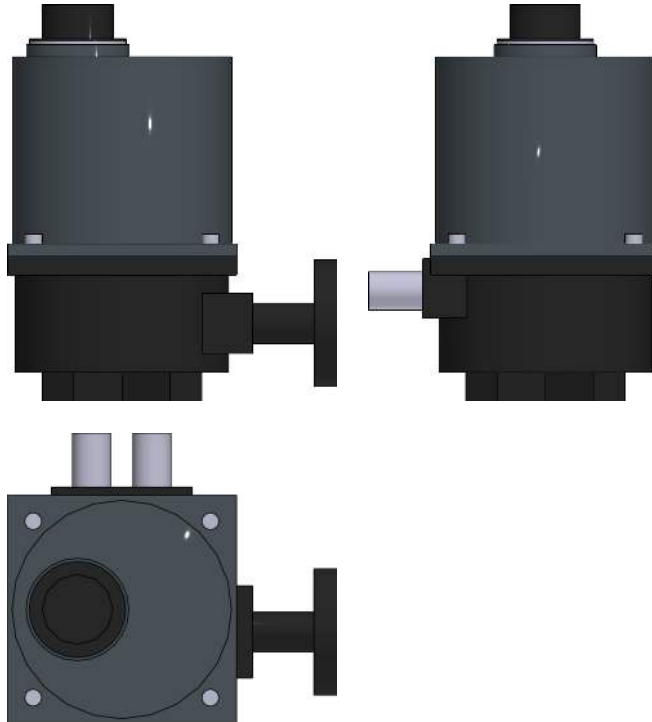


To the plugins

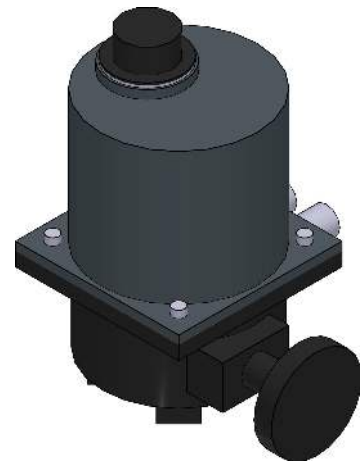


SQL361E...

2D derivation



ISO view



Bill-Of-Materials

N°	Description	Amount
1.1	SQL361E40 Drehantrieb 40Nm (0)	1



3Dfindit

powered by  **CADENAS**



SIEMENS

SQL361E...

Technical drawings



3Dfindit

powered by  CADENAS



SIEMENS

SQL361E...

Technical data

SA010ID04 (Manufacturer name)	Siemens Building Technologies EUROPÄISCHES Portfolio
SA700ID04 (Product description)	SQL361E40 Rotary actuator 40Nm
SA110ID05 (Producttype (ASN))	SQL361E40
LOD (LoG Level)	200
PREVIEW (Preview)	../bilder/a6v13735544.png
SA100ID04 (Actuator type)	electromotive
SA500ID03 (Applications)	water
SA300ID03 (Mechanische Kraftübertragung)	rotary
SA200ID03 (Ansteuerung)	continuous
SA700ID05 (nominal/operating voltage / V)	110
SA700ID06 (type of nominal/operating voltage)	AC
SA700ID07 (minimum operating voltage (lower functioning limit) / V)	207
SA700ID08 (maximum operating voltage (upper functioning limit) / V)	253
SA700ID09 (nominal frequency (according to DIN EN 50160) / Hz)	50/60
SA700ID12 (maximum power consumption AC (in starting state) / VA)	53
SA700ID29 (degree of protection provided by enclosure)	IP67
SA700ID38 (lock against rotation)	no
SA700ID20 (maximum temperature of medium / °C)	120
SA700ID22 (Minimum temperature of medium / °C)	-30
SA700ID24 (maximum ambient temperature / °C)	71
SA700ID25 (minimum ambient temperature / °C)	-20
SA700ID26 (allowable ambient humidity (in operation) / % rF)	100
SA700ID27 (condensation allowable)	no
SA700ID32 (mass (net) / kg)	3.8
SA71006ID04 (width / mm)	171
SA71006ID05 (depth / mm)	145
SA71006ID06 (height / mm)	212
LINK (Product link)	http://www.siemens.com/btproduct?S55162-A130
SA810ID03 (Order number)	S55162-A130
SA810ID04 (Datanorm number)	S55162-A130
SA810ID06 (GTIN number)	4047625022136



3Dfindit

powered by  CADENAS



SIEMENS

SA810ID10 (Description text)	Electric motorised actuators, 40 Nm, 90°, AC 230 V, DC 0...10 V, 4...20 mA control signal
SA810ID14 (Quantity unit)	PCE
SA810ID15 (Quantity per package)	1
SA010ID06 (Manufacturer web address)	http://www.siemens.com/buildingtechnologies
SUPPORTLINK (Supportlink)	https://support.industry.siemens.com/cs/ww/en/ps/25261
SA010ID12 (Status of the manufacturer's catalog)	20240105
ETIMCLASSC (ETIM classcode)	EC011290
ETIMCLASSN (ETIM classname)	Electric servomotor
IFCEXPORT (IfcExportAs)	IfcActuator.ELECTRICAUTUATOR
OMNICLASSNU (OmniClass number)	23-27 33 15
OMNICLASS (OmniClass title)	Motor Operated Valve Actuators
UNICLASSC (UNICLASSC)	Pr_75_50_02_54
SA010ID02 (Sheet number of the guideline)	24



3Dfindit

powered by  CADENAS



SIEMENS

SQL361E...

E-Learning

Discover free training for 3Dfindit, the search engine for engineers, designers, and architects. Our 30 to 50-minute interactive courses provide you with comprehensive knowledge about the platform. Upon successful completion, you will receive a certificate. Start your first course now and master 3Dfindit!

**Become an Expert of
Digital Engineering**



3Dfindit

**Boost your career
and get ready
for Industry 4.0!**

[Learn more](#)

[Start course](#)